



Influence of axial load on shear properties of HDRBs

Virginio Quaglini^a, Eleonora Bruschi^a, Ahmad Basshofi Habieb^a, Gabriele Milani^a

^a Department Architecture, Built Environment and Construction Engineering, Politecnico di Milano, Piazza Leonardo da Vinci 32, 20133 Milan, Italy

Keywords: High Damping Rubber Bearings, shear modulus, equivalent viscous damping, axial load

ABSTRACT

The shear properties of High Damping Rubber Bearings (HDRBs) are affected by a number of factors including axial load, frequency of deformation, temperature and ageing. While permissible variations of design properties with frequency, temperature and ageing are prescribed in the standards, dedicated provisions accounting for their change with axial load are not yet available in practice.

The study aims at illustrating different methods for investigating the influence of axial load on the shear properties of HDRBs. In the first part of the research, small scale laminated isolators are tested on a custom biaxial system and the secant modulus and damping factor of the elastomeric compound are assessed at different levels of compression stress. In the second part, full scale HDRB prototypes are assessed in cyclic shear tests under three different levels of axial load, and shear stiffness and viscous damping are measured. A 3D finite element model of the isolator is hence formulated in Abaqus software; within the numerical formulation, the behavior of the elastomer is reproduced using a hyperelastic strain energy function combined with a relaxation function, where both functions are calibrated on uniaxial tests.

The tests seem to point out that the axial load has a more substantial influence on the equivalent viscous damping than on the shear modulus of the elastomer. Further, numerical analyses demonstrate that the vertical – horizontal coupling of HDRBs can be deduced from the characteristics of the elastomer measured in simple uniaxial tests.

1 INTRODUCTION

Base isolation is today a viable solution to mitigate the effects of earthquakes on constructions. The design of the base isolation hardware necessary to implement such strategy, such as elastomeric isolators and sliding bearings, has been developed in the past decades by many researchers and is today regulated by standards.

Rubber bearings have been used as seismic isolators since the mid of the '70s (Naeim and Kelly 1999). Today the most popular types of rubber isolators are the High Damping Rubber Bearings (HDRBs) and the Lead Rubber Bearings (LRBs). The mechanical characteristics of HDRBs affecting their performance as seismic isolators, namely stiffness and damping, depend only on the mechanical properties of the rubber compound. On the contrary, in LRBs the elastomer is required to provide the horizontal stiffness to the isolation system as well as a certain restoring capability, while the damping capacity relies on the hysteretic deformation of the lead core. A large variety of

elastomeric compounds based on either natural or synthetic rubber is nowadays available for HDRBs and LRBs, with different damping, shear modulus, and vulcanization profile, according to proprietary techniques developed by the manufacturers.

An accurate characterization of the mechanical properties of the elastomer is fundamental for the design of HDRBs and LRBs. Nevertheless, despite of the large diffusion of these devices, some shaded areas still exist that need further investigation. One issue is the dependency of the mechanical properties on the environment (Constantinou et al. 2007). To date, a large part of the studies on the behaviour of rubber for bridge bearings focused on their ageing deterioration (Itoh et al. 2006). However, the mechanical properties of elastomers can change due to a number of factors other than ageing, such as the strain amplitude, the frequency of loading, the number of cycles, and air temperature variations, and the response of a structure seismically isolated with rubber bearings can be strongly influenced by

each of the above parameters (Thompson et al. 2000).

According to the European Standard on anti-seismic devices (CEN 2009), two sets of design properties must be determined for elastomeric isolators, the Upper Bound Design Properties (UBDP) leading to the maximum forces in the superstructure, and the Lower Bound Design Properties (LBDP) leading to the maximum displacements of the isolation system. Both UBDP and LBDP should be derived from tests performed on full scale devices, but for HDRBs the Standard allows to determine the effects of temperature, frequency and ageing by testing rubber specimens under pure shear, instead of full isolators, as it is acknowledged that the cyclic behaviour of steel reinforced rubber bearings is primarily governed by the mechanical properties of rubber (Cardone et al. 2011). An important factor that is generally ignored when testing rubber specimens is the influence of the compression stress on the shear properties of the elastomer, which was instead demonstrated to have a fundamental importance and needs to be taken into account for a correct understanding of the behaviour of HDRBs under service conditions (Quaglini et al. 2016).

One of the first studies addressing this topic was published by Aiken (Aiken et al., 1992), who tested HDRBs with shape factors (ratio of load area to stress-free area of a single rubber layer) of 8.75 and 20 and design axial stresses of 3.2 and 5.1 MPa, respectively. The bearings were tested at several levels of compression stress, from 0 to 10 MPa for the first geometry and from 0 to 15 MPa for the second geometry, and the results showed an increase of both shear stiffness and damping with the compression load. Kelly (Kelly 1993) evaluated the performance of a rubber isolator characterized by nominal shear modulus of 0.86 MPa, damping of 15% and shape factor of 30. The compression stress was increased from 0 to 10.34 MPa, and the tests showed a negligible influence on the shear stiffness, while the damping increased from 13% to 17% (relative change of 30%).

Mori (Mori et al. 1996) tested five isolators differing for geometry and rubber mixture. When the axial load was small in comparison with the design value (say 34%), then the shear hysteresis loop was a different shape from that one under the high applied axial load. Also, the area of the hysteresis loops became larger (i.e. damping increased) as the axial load was increased. On the contrary the influence of the axial load within the range between 0.68 and 1.25 times the design value on the shear stiffness was negligible. Iizuka (Iizuka 2000) tested laminated elastomeric bearings with shape factor 20 under four different

levels of compression (0; 4.90; 9.81; 19.60 MPa) up to 500% shear strain. The study confirmed the influence of the axial load on the nonlinear large-deformation shear behaviour of rubber, resulting in strain-hardening in the shear direction under small axial forces, but decrease in horizontal stiffness under large axial forces probably due to buckling of the rubber layers. Ryan (Ryan et al. 2005) studied the behaviour of HDRBs with design axial stress of 3.2 MPa and shape factor of 8.27 and 20 respectively, subjected to the combined action of compression and shear force, concluding that in the range 0 to 10 MPa the shear stiffness of HDRBs decreases with increasing of the axial load.

From the review of the above literature it is clear that, though the influence of the axial load on the shear properties of HDRBs is a fact, the sensitivity of the individual bearing can vary significantly depending on the type and amount of fillers and by the amount of cross-linking of the mixture (Burtscher and Dorfmann 2004).

The paper presents some approaches for investigating the influence of the axial load on the shear properties of HDRBs from both an experimental and a numerical perspective. All the studies are performed on the same natural rubber compound. In the first part of the study, small scale prototypes of HDRBs are tested under varying axial load in the range of 0.5 to about 21 MPa, whereas in the second part the tests are performed on real scale isolators, and some experimental issues are put in evidence. Eventually, a numerical analysis is performed by using as case study the elastomeric isolator tested at full scale.

2 SMALL SCALE PROTOTYPES

2.1 Test pieces

Small circular test pieces (Figure 1), with a diameter of 80 mm, are used. Each piece is comprised of 10 rubber layers, 4 mm in thickness each, alternated to 2 mm thick steel plates. The upper and the lower layers are vulcanized to two thick (10 mm) steel plates that fit recessing holes in the plates of the testing machine. The total thickness of rubber, which is the parameter that governs the maximum shear displacement, is 40 mm, while the primary and the secondary shape factors are $S_1 = 5$ and $S_2 = 2$, respectively. The test pieces are made of commercial rubber compound, categorized as “Normal” (hardness between 55 and 65 International Rubber Hardness Degree (IRHD)), with shear modulus $G = .0.75$ MPa and equivalent viscous damping factor $\xi = 12\%$.



Figure 1. Small scale HDRB test piece: picture of a specimen (left), and cross-section (right)

2.2 Test set-up

The biaxial testing system is illustrated in Figure 2. The system consists of a stiff four columns steel frame equipped with two servo-hydraulic jacks. The vertical jack, rated 500 kN, applies the compressive load to the test piece, while the horizontal jack, rated 100 kN and with a 100 mm stroke, drives a shear plate that moves horizontally. The system permits to test simultaneously a pair of test pieces, placed symmetrically with respect to the shear plate in a double shear configuration (Figure 3).



Figure 2. Schematic view of the biaxial test set-up

2.3 Test procedure

The sequence of tests performed on the pair of HDRB test pieces is outlined in Table 1. By adjusting the vertical load, the compression stress p is varied from a minimum value of 0.1 MPa to a maximum value of 24 MPa, with 3 MPa increments up to 12 MPa, and 6 MPa increments above 12 MPa. At each stress level, five full cycles

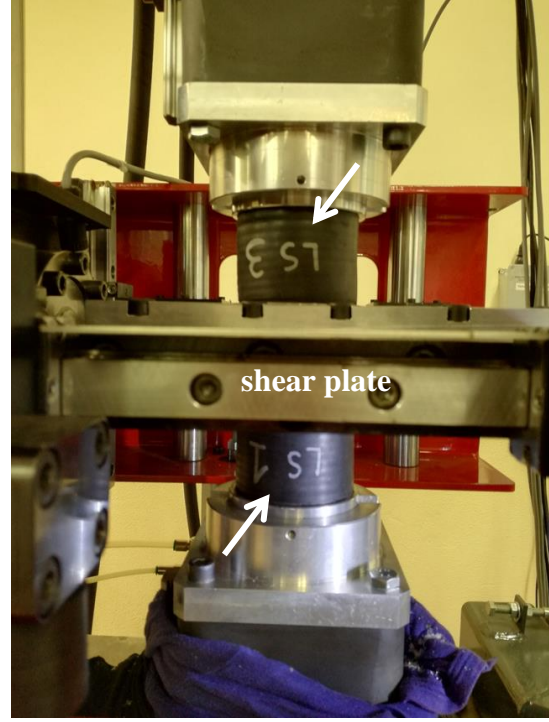


Figure 3. Test pieces in double shear configuration

of horizontal displacement are imposed with sinusoidal waveform, frequency $f = 0.5$ Hz and amplitude 40 mm, resulting in a shear strain amplitude $\gamma_a = 100\%$. The sequence of tests is carried out in order of increasing vertical loads, with a dwell time of 30 minutes between any pair of tests in order to allow the viscoelastic recovery of the rubber. The tests are performed at a room temperature of $19 \pm 2^\circ\text{C}$.

Table 1. Test protocol for small scale HDRB test pieces.

p (MPa)	γ_a (%)	f (Hz)	cycles
0.1 – 3 – 6 – 9	100	0.5	5
– 12 – 18 – 24			

2.4 Results

Figure 4 illustrates the hysteretic shear force–displacement curves obtained at different levels of pressure p ; in the diagrams, only the curve relevant at the third cycle is reported for each stress level. It is evident the large difference in shape between the curve at 0.1 MPa (i.e. virtually without axial load), and the curves relevant to tests at $p \geq 3$ MPa, with a substantial increase of the dissipated energy (i.e., the area enclosed in the loop).

From the horizontal force F and the horizontal deflection d of the single specimen, the shear stress τ and shear strain γ of rubber are calculated as follows:

$$\tau = \frac{F}{A} \quad (1)$$

$$\gamma = \frac{d}{t_e} \quad (2)$$

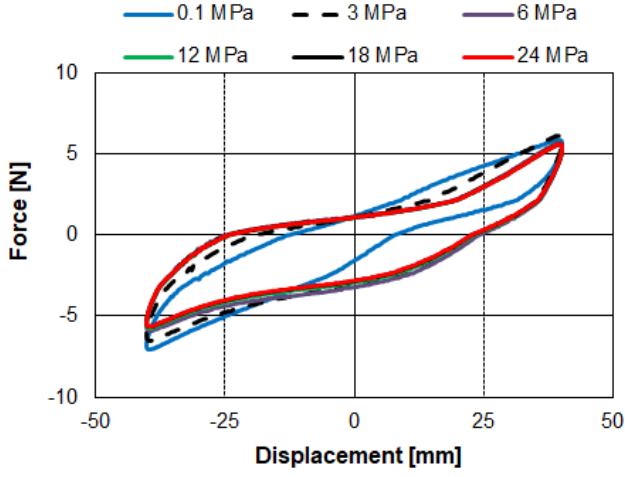


Figure 4. Shear force – displacement loops at different pressure levels

where A is the area of the plan section of a rubber layer parallel to the direction of shear, and t_e is the total thickness of rubber subjected to shear. From the hysteretic shear stress–strain diagram, the secant shear modulus G and the equivalent viscous damping factor ξ are then calculated at each cycle:

$$G = \frac{\tau_2 - \tau_1}{2 \cdot \gamma_a} \quad (3)$$

$$\xi = \frac{EDC}{2\pi \cdot G \cdot \gamma_a^2} \quad (4)$$

where τ_1 and τ_2 are the stresses at the maximum shear deflections in either direction, EDC is the energy dissipated per cycle and $\gamma_a = 1$ is the shear strain amplitude.

Figure 5 plots the change of G and ξ as a function of the compression stress p . The secant modulus has a 10% decrease when p rises from 3 MPa to 6 MPa, and holds constant for higher pressure levels. The equivalent viscous damping factor has a 38% increase when p is increased from 0.1 MPa to 3 MPa, and a further 10% increase at $p = 6$ MPa, and then it holds substantially stable up to $p = 24$ MPa.

3 FULL SCALE ISOLATORS

3.1 Test pieces

The tests pieces are two HDRBs designed for an axial load $N_{sd} = 1150$ kN and a seismic displacement $d_{bd} = 250$ mm. The devices are circular in shape, with a diameter of 500 mm and a total thickness of 218 mm. Each HDRB consists of 14 rubber layers, 9 mm thick each, alternated with 13 steel plates, 4 mm thick, and 2 end plates of 20 mm thickness. The primary and the secondary shape factors are $S_1 = 18.9$ and $S_2 = 2$, respectively. A sketch of the cross section of the

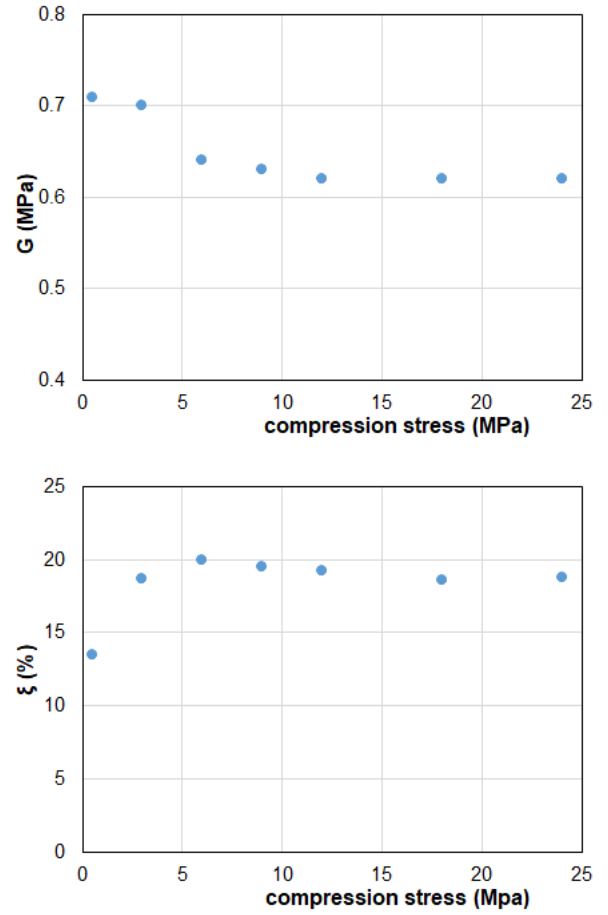


Figure 5. Influence of the compression stress on secant shear modulus (above) and equivalent viscous damping factor (below); values are determined at the third cycle

of 14 rubber layers, 9 mm thick each, alternated with 13 steel plates, 4 mm thick, and 2 end plates of 20 mm thickness. The primary and the secondary shape factors are $S_1 = 18.9$ and $S_2 = 2$, respectively. A sketch of the cross section of the isolator is shown in Figure 6. The raw material is the same rubber compound used to manufacture the small scale test pieces.

3.2 Test set-up

The tests were performed at the Laboratory for Testing of Materials and Structures (SisLaB) at the University of Basilicata, using a custom bearing tester system (Figure 7). The facility has load capacity of 8000 kN in the vertical direction and 1000 kN in the horizontal direction, and a displacement capacity of 1000 mm. The system incorporates a plate supported by low-friction bearings which moves in the horizontal direction, and allows to apply a shear force to the isolator. A single device can be tested each time.

3.3 Test procedure

The sequence of tests performed on the HDRB isolators is illustrated in Table 2. The devices are tested at 0.45, 1.0 and 2.0 times the design axial

load N_{sd} , which correspond to a compressive stress on rubber of 2.63, 5.85 and 11.70 MPa respectively. At each load level, three sinusoidal cycles are performed to a maximum displacement $d_{bd} = 250$ mm, corresponding to a shear strain amplitude $\gamma_a = 198\%$, at a frequency $f = 0.5$ Hz. The dwell time between two tests is of about 20 minutes. All tests are performed at room temperature.

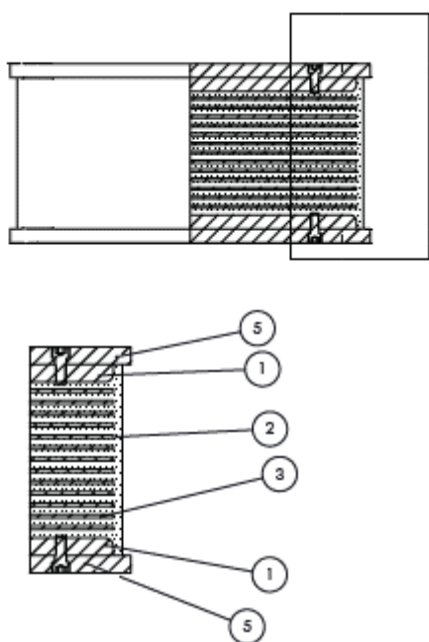


Figure 6. Sketch of the HDRD specimen, and cross-section details



Figure 7. The bearing tester system at University of Basilicata

Table 2. Test protocol for HDRB isolators (N : axial load; d_{bd} : displacement amplitude).

N (kN)	d_{bd} (mm)	f (Hz)	cycles
1150	250	0.5	3
530	250	0.5	3
2300	250	0.5	3

3.4 Results

Figure 8 illustrates the variation of the effective stiffness K_{eff} , evaluated at the maximum shear deflection, and the equivalent viscous damping factor ξ with the axial load. The shear stiffness at N_{sd} is found to decrease by 9% when the axial load is halved, and to decrease by 14% when the axial load is increased by a factor of 2. This behaviour, which is inconsistent with the findings of the small scale test, may be ascribed to the insufficient duration of the dwell time between the first and the second tests, at 1150 kN and 530 kN respectively, which could be too short to permit complete cooling of the isolator. Since the modulus of rubber decreases with increasing of temperature, this can explain the unexpected decay of stiffness at $0.45 N_{sd}$. The equivalent viscous damping factor has a more regular behaviour, with a negligible change when the design load is halved, and a 25% increase on average when the design load is increased by a factor of 2.

The secant modulus of the rubber can be calculated from the effective stiffness of the isolator. For a compressive stress of 5.85 MPa, corresponding to N_{sd} , the value of the secant modulus derived from the tests on isolators counts $G = 0.87$ MPa, which is 25% higher than the value ($G = 0.7$ MPa) determined in the small scale tests; similarly, the equivalent viscous factor of the isolator is about 50% less than the relevant figure assessed on the small scale pieces (10.4% against 20%).

4 FINITE ELEMENT INVESTIGATION

4.1 Numerical formulation

A 3D finite element model of the HDRB isolator shown in Figure 5 has been formulated in the software program Abaqus. Taking advantage from the symmetry of the device, only half of the

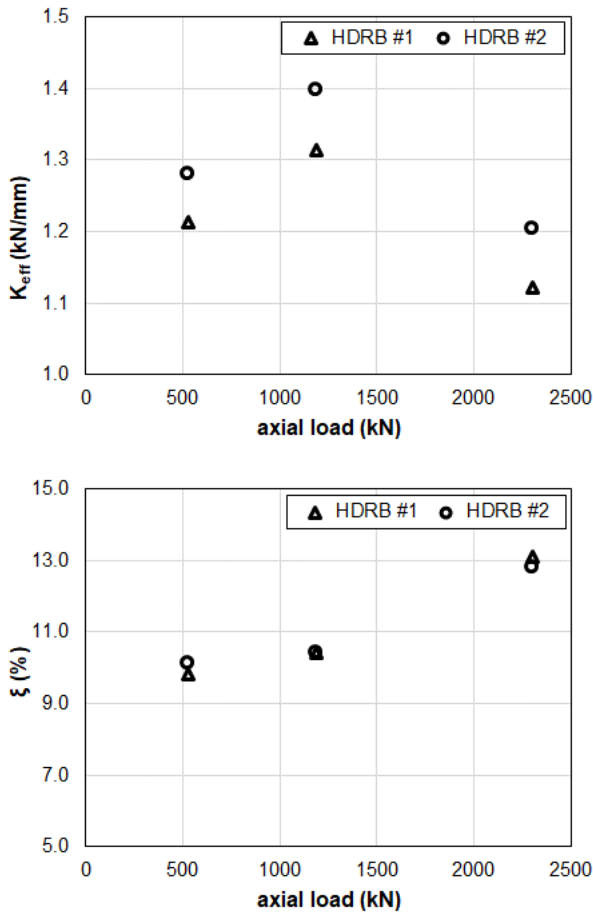


Figure 8. Influence of axial load on effective stiffness and equivalent viscous damping factor of full scale HDRBs; values determined at the third cycle

isolator has been modelled (Figure 9). The size of the mesh of finite elements for the rubber layers is 10×4.5 mm. The mechanical behaviour of the elastomer has been described by using a hyperelastic constitutive law (Yeoh 1993) to represent the force-displacement relationship, and an exponential Prony series to represent the viscous behaviour. Model parameters have been calibrated based on experimental data obtained from uniaxial tensile tests and stress relaxation tests on rubber specimens (Figure 10), according to the procedure described by (Habieb et al. 2019).

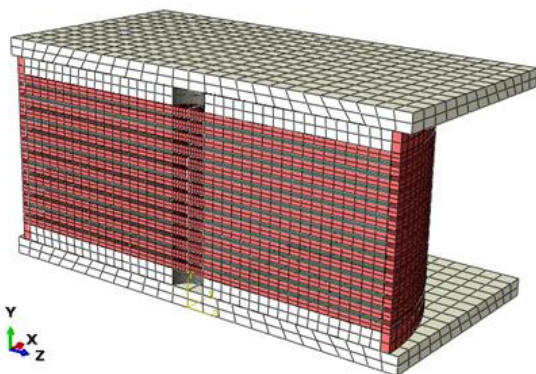


Figure 9. 3D finite element model of the HDRB isolator

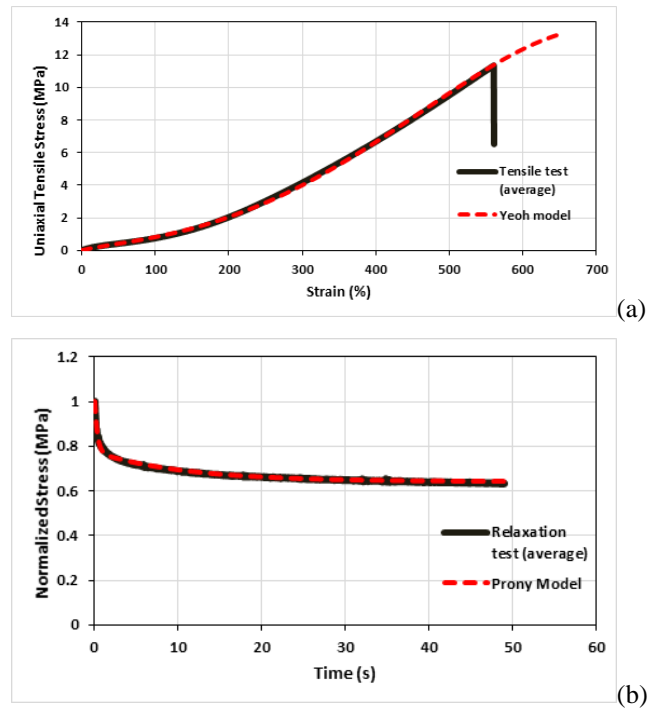


Figure 10. Calibration of elastomer constitutive parameters implemented in the finite element model of HDRB: (a) hyperelastic Yeoh model; (b) Prony series

Numerical analyses have been performed by simulating the application of an axial load on the isolator, and a concurrent displacement in the horizontal direction. The horizontal displacement is applied according to a sinusoidal waveform, with amplitude $d_{ba} = 250$ mm and frequency $f = 0.5$ Hz. Simulations have been performed for three values of axial load, namely $N = 530$ kN, $N = 1150$ kN, and $N = 2300$ kN, with 3 cycles per load level.

4.2 Results

Figure 11 compares the horizontal force – displacement curves predicted by the numerical code to the experimental curves obtained in the tests on full scale HDRBs. By considering the third cycle of loading, the agreement is fair for both the tests at $N = 1150$ kN and $N = 530$ kN, while at $N = 2230$ kN the numerical model is capable to correctly reproduce the loading branch of the curve, but underestimates the actual damping and the dissipation capability of the isolator.

The effective stiffness and equivalent viscous damping factor calculated in the numerical analyses are eventually compared to the experimental values in Table 3. The numerical model calculates a decrease in stiffness when the axial load is increased from N_{sd} to $2 N_{sd}$, but K_{eff} does not change substantially when the axial load is reduced to $0.5 N_{sd}$. The accuracy of the numerical prediction is good as concern the stiffness (8% deviation at $2 N_{sd}$), but the model underestimates the actual damping capacity of the isolators and is not able to capture the increase in

viscous damping when N passes from N_{sd} to $2 N_{sd}$. (30% deviation).

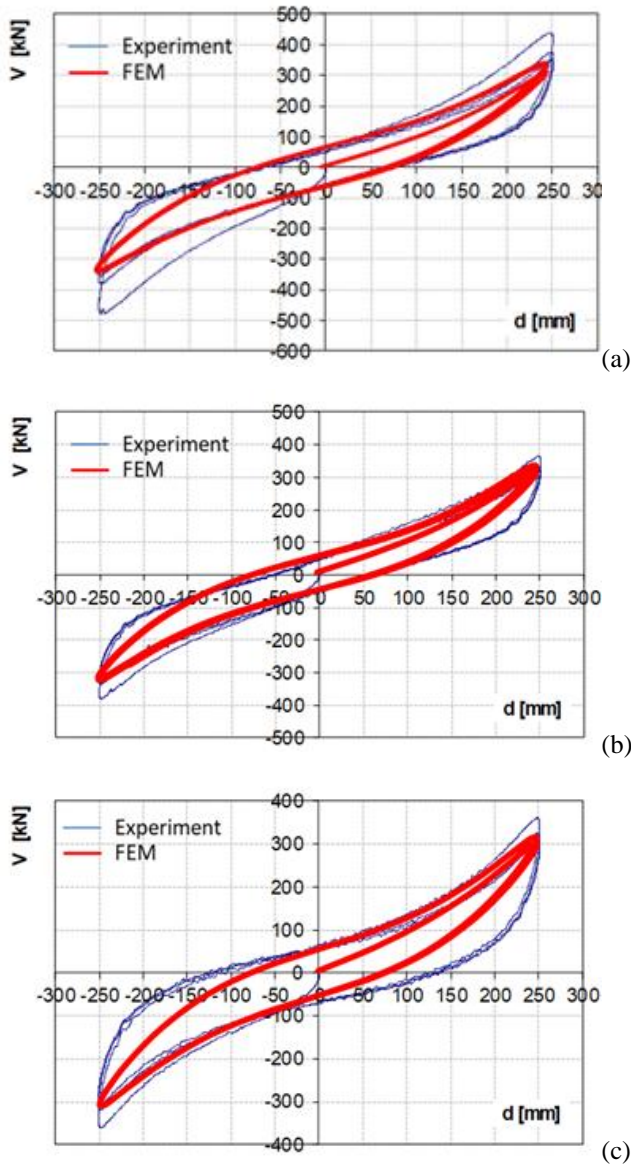


Figure 11. Comparison between experimental and numerical (FEM) force – displacement curves of the HDRB isolator at different levels of axial load: (a) $N = 1150$ kN; (b) $N = 530$ kN; (c) $N = 2300$ kN

Table 3. Experimental (EXP) and numerical (FEM) values of effective stiffness and equivalent viscous damping factor at different levels of axial load.

N (kN)	K_{eff} (kN/mm)		ξ (%)	
	EXP	FEM	EXP	FEM
1150	1.36	1.36	10.40	9.17
530	1.25	1.32	9.95	8.33
2300	1.16	1.26	12.95	9.03

5 DISCUSSION

The study presents three different approaches to investigate the influence of the axial load on the properties in shear of HDRBs.

Experiments on small scale test pieces are rather cheap; the specimens are small and easy to manufacture and transport, and a wide range of combinations of axial load and horizontal displacement can be tested at an affordable cost. Owing to the small size of the specimens, heating of the elastomer is expected to be small. Consistent results were obtained in the test campaign illustrated in this paper. However scaling effect may limit the accuracy of the extrapolation of the results to the real scale.

Tests on full scale isolators are expensive because require dedicated facilities and because the specimens are large and bulky. Moreover, heating of the isolator and its effect on the shear response may be not negligible in tests involving large energy inputs. Therefore in designing the experimental protocol an appropriate dwell time after each test must be envisaged in order to allow cooling of the specimens. However, since the tests are performed at the real scale, the results can be directly transferred to the application.

Numerical analyses allow to investigate many loading scenarios at a very limited cost, but the numerical model needs to be validated against experimental data to provide reliable results. Whereas accurate hyperelastic models are available to capture the actual stress – strain relationship of standard rubber, the viscous behavior of elastomeric compounds has not yet been effectively implemented into numerical codes.

6 CONCLUSIONS

The characterization of the effects of the axial load on the properties in shear of HDRBs is fundamental for developing accurate analyses and design of base isolation systems.

Examples of experimental and numerical approaches to investigate this subject have been presented in the paper. Whereas testing of small scale pieces is convenient at the stage of development and characterization of new rubber compounds, numerical analyses and testing of full scale isolators are most indicated at the final stage of design and validation of isolators for the real application.

Both small scale and large scale tests evidence that the axial load has a more substantial influence on the equivalent viscous damping than on the shear modulus of the elastomer. The numerical

analyses demonstrate that the vertical – horizontal coupling of HDRBs can be deducted with a sufficient reliability from the characteristics of the elastomer measured in simple uniaxial tests, though more consistent models for viscous damping need to be formulated.

REFERENCES

- Aiken, I.D., Kelly, J.M., Clark, P.W., Tamura, K., Kikuchi, M., Itoh, T. 1992. Experimental studies of the mechanical characteristics of three types of seismic isolation bearings. *10th World Conference on Earthquake Engineering*. July 19-24, Madrid, Spain.
- Burtscher, S.L., Dorfmann, L.A., 2004. Compression and shear tests of anisotropic high damping rubber bearings. *Engineering Structures*, **26**(13):1979-1991.
- Constantinou, M.C., Whittaker, A.S., Kalpakidis, Y., Fenz, D.M., Warn, G.P., 2007. *Performance of Seismic Isolation Hardware under Service and Seismic Loading*. Technical Report MCEER-07-0012.
- Cardone, D., Gesualdi G., Nigro, D., 2011. Effects of air temperature on the cyclic behavior of elastomeric seismic isolators. *Bulletin of Earthquake Engineering*; **9**(4), 1227-1255.
- CEN (European Committee for Standardisation) 15129, 2009. *Anti-seismic Devices*.
- Habieb, A.B., Milani, G., Quaglini, V., Milani, F., 2019. Experimentation and numerical modelling of recycled rubber pads for seismic isolation under accelerated ageing. *COMPADYN 2019. The 7th International Conference on Computational Methods in Structural Dynamics and Earthquake Engineering*. June 24-26, Crete, Greece.
- Itoh, Y., Gu, H., Satoh, K., Yamamoto, Y., 2006. Experimental investigation on ageing behaviors of rubbers used for bridge bearings. *Structural Engineering / Earthquake Engineering JSCE*, **23**(1), 17s-31s.
- Iizuka, M., 2000. A Macroscopic Model For Predicting Large-Deformation Behaviors Of Laminated Rubber Bearings, *Engineering Structures*, **22**(4), 323-334.
- Kelly, J.M., 1993. *Earthquake-resistant design with rubber*, Springer-Verlag, London, UK.
- Mori, T., Moss, P.J., Cooke, N., Carr, A.J., 1999. The Behavior Of Bearings Used For Seismic Isolators Under Shear And Axial Load. *Earthquake Spectra*, **15**(2), 199-224.
- Naeim, F., Kelly, J.M. 1999. *Design of Seismic Isolated Structures*, Wiley.
- Quaglini, V., Dubini P., Vazzana, G., 2016. Experimental assessment of High Damping Rubber under combined compression and shear. *ASME Journal of Engineering Materials and Technology*; **138**, 0110021-9.
- Ryan, K.L., Kelly, J.M., Chopra, A.K. 2005. Experimental observation of axial load effects in isolation bearings. *ASME Journal of Engineering Mechanics*, **131**(12), 1270-1278.
- Thompson, A.C.T., Whittaker, A.S., Fenves, G.L., Mahin, S.A. 2000. Property modification factors for elastomeric seismic isolation bearings. *The 14th World Conference on Earthquake Engineering*. October 12-17, Beijing, China.
- Yeoh, O.H. 1993. Some forms of the strain energy function for rubber. *Rubber Chemistry and Technology*, **66**(5), 754-771.